

LEAF SAVER™



Ant Bait



CUT DOWN COSTLY TEXAS LEAF CUTTER ANTS



Protect Your Foliage and Seedlings with Leaf Saver™ Ant Bait

The Texas Leaf Cutter Ant (*Atta texana*) causes up to \$5 million in estimated annual agricultural damage to forested areas, commercial nurseries, and landscaped areas in the United States*.

Leaf Saver™ Ant Bait effectively controls these costly ants with a highly attractive bait specifically sized for greater acceptance by the Texas Leaf Cutter Ant.

*https://urbanentomology.tamu.edu/urban-pests/ants/leaf_cutting/

HOW LEAF SAVER™ ANT BAIT WORKS

Leaf Saver™ Ant Bait comes ready to use, and can be applied directly to individual mounds or as a broadcast application. Texas Leaf Cutter Ants are highly attracted to Leaf Saver™ Ant Bait due to its specifically designed granule size and bait matrix. Foraging ants take the bait back to feed to the rest of the colony, including the queen(s). Inside the mound, Leaf Saver™ Ant Bait is passed to the queen(s) and other ants. By the end of one to four weeks, the queen(s) and most of the ants in the mound will have eaten Leaf Saver™ Ant Bait and died. When the queen(s) is/are dead, no new workers can be produced so the colony dies. This easy-to-use product provides a solution to a difficult pest to control.

FEATURES

- Kills Texas Leaf Cutter Ants
- Highly attractive
- Ready-to-use formulation in a specifically sized granular bait
- Non-restricted use

BENEFITS

- Protects replacement seedlings and foliage
- Destroys the mound
- Low use rates
- Provides up to three months of ant control

FOR USE ON:

- Forestry operations
- Commercial nurseries
- Landscaped areas
- Golf courses
- Soil around citrus (non-bearing) crops
- Parks
- Rangeland
- Pastures
- Commercial grounds
- School grounds

ANT IDENTIFICATION

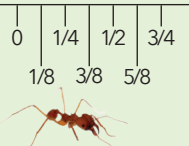
Texas Leaf Cutter Ants (*Atta texana*) range in size from 1/8- to 1/2-inch long, and are dark-brown in color. They have three pairs of spines on the thorax as well as an additional pair of spines on the back of their heads that make them very distinguishable.

Colonies of Leaf Cutter Ants can be up to 50-80 feet across, containing as many as 2 million ants living underground.

Leaf Cutter Ants forage during the day when temperatures are between 45-80 degrees, except during the summer, when they forage at night.*

During the winter when foliage is scarce, Leaf Cutter Ants attack pine saplings, causing damage to nearly 12,000 acres a year.*

ACTUAL SIZE



APPLICATION RATES

To treat individual mounds of the Texas Leaf Cutter Ant, use 3/4 lb. per colony.

When using as a broadcast treatment utilizing a spreader/seeder, use 1 1/2 to 2 1/8 lbs. per acre.

See label for complete Directions For Use.

ACTIVE INGREDIENT

Hydramethylnon 0.88%

RESTRICTED-ENTRY INTERVAL (REI)

12 hours for Worker Protection Standards only



Packaged 2x10 lb. case

* = Merchant, Michael. "Texas Leaf Cutting Ant." Insects in the City, Texas A&M AgriLife Extension, citybugs.tamu.edu/factsheets/landscape/ants/ent-1002/.

To learn more about Leaf Saver™ Ant Bait and all the ant control products from Central Life Sciences, visit CentralAntControl.com or call 1.800.347.8272.